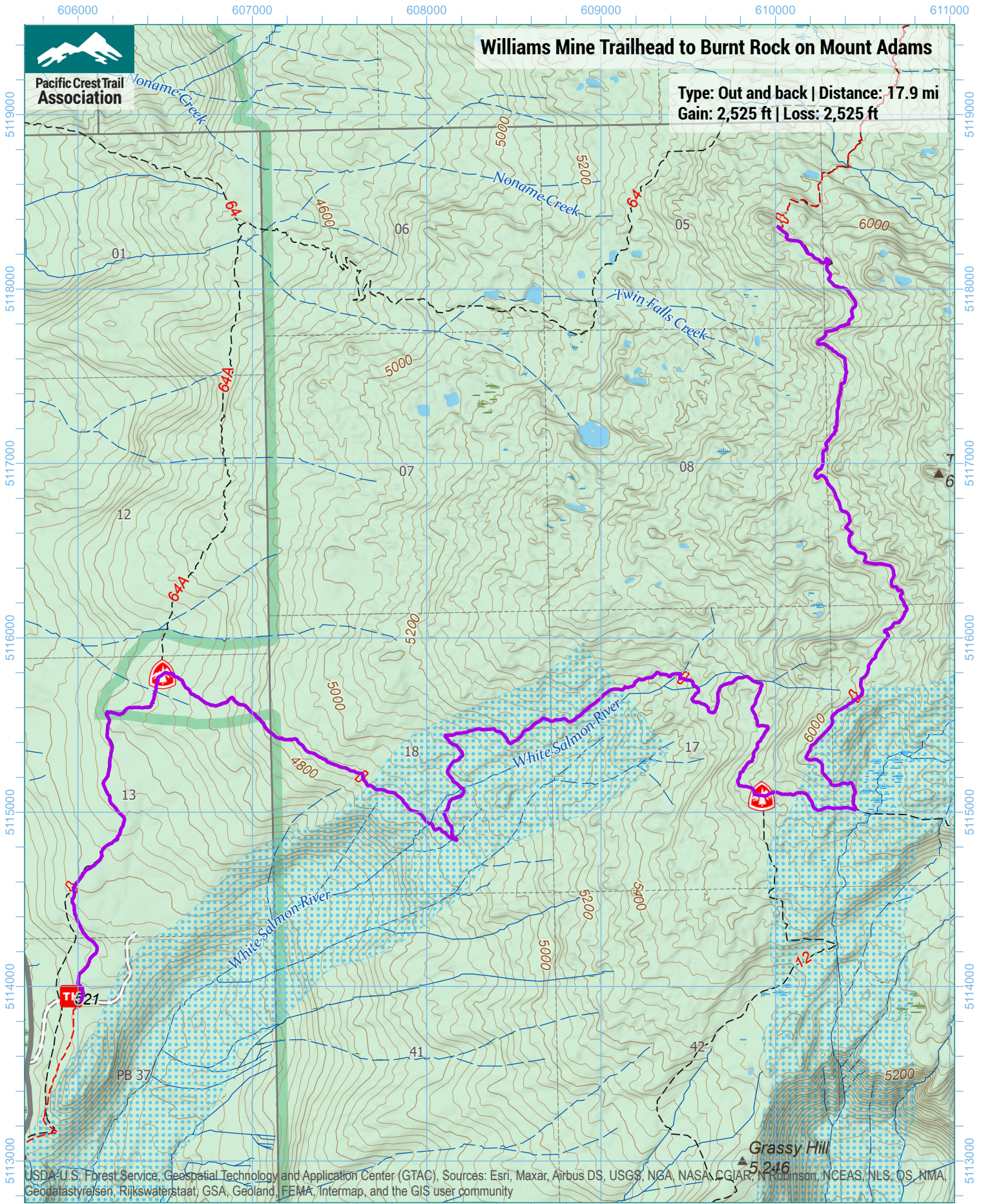




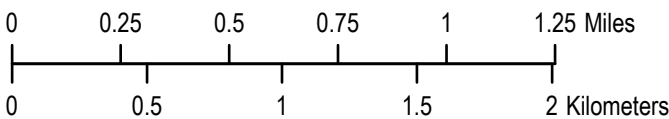
Pacific Crest Trail Association

# Williams Mine Trailhead to Burnt Rock on Mount Adams

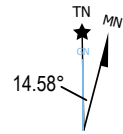
Type: Out and back | Distance: 17.9 mi  
Gain: 2,525 ft | Loss: 2,525 ft



USDA-U.S. Forest Service, Geospatial Technology and Application Center (GTAC), Sources: Esri, Maxar, Airbus DS, USGS, NGA, NASA, CGIAR, N Robinson, NCEAS, NLS, OS, NMA, Geodatastyrelsen, Rijkswaterstaat, GSA, Geoland, FEMA, Intermap, and the GIS user community



1 inch equals 2,333 feet  
1:28,000  
WGS 1984 UTM Zone 10N



Trip data by PCTA  
Basemap by US Forest Service  
Contour interval: 40ft